



**Welcome**

**Prof Dayanand Dongaonkar**

**Secretary-General  
Association of Indian Universities**

**From association is born  
integration**



# **Student Mobility: National Strategies and International Trends**

*Organised by*

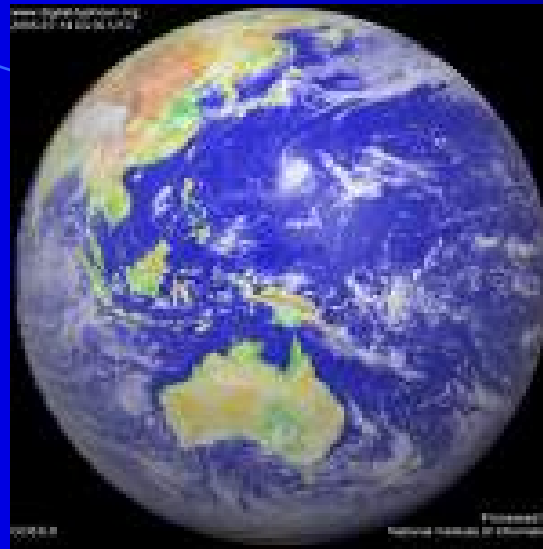
**Institute of International Education  
(IIE)**

**17<sup>th</sup> July, 2008**

**Utrecht University  
Netherlands**

# Scheme of Presentation

- Introduction
- About AIU
- AIU Initiatives for Student Mobility
- Data on Indian Higher Education
- Structure of Higher Education
- Student Mobility: National Strategies and International Trends



# AIU-Historical Perspective

# 1925

The Inter-University Board (IUB) of India formed and its first meeting was held at University of Bombay, Bombay

**1967**

**IUB registered as a Society**

**1973**

**IUB renamed as**

**Association of Indian Universities (AIU)**

# Divisions of AIU

<b>Division</b>	<b>Year</b>
<b>SG's office and Meetings</b>	<b>1925</b>
<b>Administration</b>	<b>1925</b>
<b>Finance</b>	<b>1925</b>
<b>Evaluation</b>	<b>1925</b>
<b>Sports</b>	<b>1928</b>
<b>Library</b>	<b>1964</b>
<b>Sales &amp; Publications</b>	<b>1966</b>
<b>Research</b>	<b>1974</b>
<b>Culture (Youth Affairs)</b>	<b>1984</b>
<b>Student Information Services</b>	<b>1997</b>
<b>Computer</b>	<b>2004</b>

# India Data on Higher Education (2008)

	1947		2008
• Universities	18		426 (2008)
• No. of Colleges	591		20,676
• No. of Teachers	77,120 (1964-65)		4,36,246
• No. of Students	2,28,881	11028020 (2005)	1,28,52,684*

Source: UGC Statistical department, 2008

\* Matter taken from website <http://stats.uis.unesco.org>

# Indian Universities

(2008)



● State Universities	231
● Deemed Universities (under section 12(B) of the UGC Act 1956)	108
● Central Universities	25
● Private Universities	24
● Institutions of National Importance	33
● Institute of Established under Legislature Act.	05
<b>Total</b>	<b>426</b>

# Membership

**AIU Member Universities** **282**

**Associate Members** **3**

# Associate Membership

- Kathmandu University
- University of Mauritius
- Royal University of Bhutan

# India

## Types of Universities

(Member Universities)

● Conventional	129	● Journalism	1
● Engg & Technical	41	● Management	1
● Agril Universities	37	● Archaeology	1
● Health Sciences	16	● Museum	1
● Open	11	● Jainology	1
● Sanskrit	10	● Vedic	1
● Indian Languages	7	● Physical Education	1
● Law	6	● Population	1
● Women	5	● Economics	1
● Music	2	● Development Policy	1
● Yoga	2	● Educational Research	1
● English & Foreign Languages	1	● Rural	1
● Fine Arts	1	● Social Work	1
		● Statistics	1

**Total**

**282**

**India**

# **Data on Higher Education**

# Students Enrollment: Faculty-wise 2005-2006

Faculty	Total Enrollment	Percentage of total
Arts	4976946	45.13
Science	2255230	20.45
Commerce/ Management	1986146	18.01
Education	161009	1.46
Engineering/ Technology	795120	7.21
Medical	348485	3.16
Agriculture	63962	0.58
Animal Husbandry Science	16542	0.15
Law	336356	3.05
Others	88224	0.80
<b>Total</b>	<b>11028020</b>	<b>100.00</b>

# Women Enrolment Faculty-wise: 2005-2006

<b>Faculty</b>	<b>Women Enrolment</b>	<b>Percentage of total women enrolment</b>
Arts	2278286	51.01
Science	901309	20.18
Commerce/ Management	735160	16.46
Education	82627	1.85
Engineering/ Technology	185800	4.16
Medical	162575	3.64
Agriculture	10719	0.24
Animal Husbandry Science	3573	0.08
Law	73248	1.64
Others	33051	0.74
<b>Total</b>	<b>4466348</b>	<b>100.00</b>

# Students' Enrollment in Universities and Colleges in the States (2005-2006)

<b>Total Enrollments</b>	<b>Girls Students</b>	<b>Percentage of Girls</b>
<b>11028020</b>	<b>4466348</b>	<b>40.49</b>

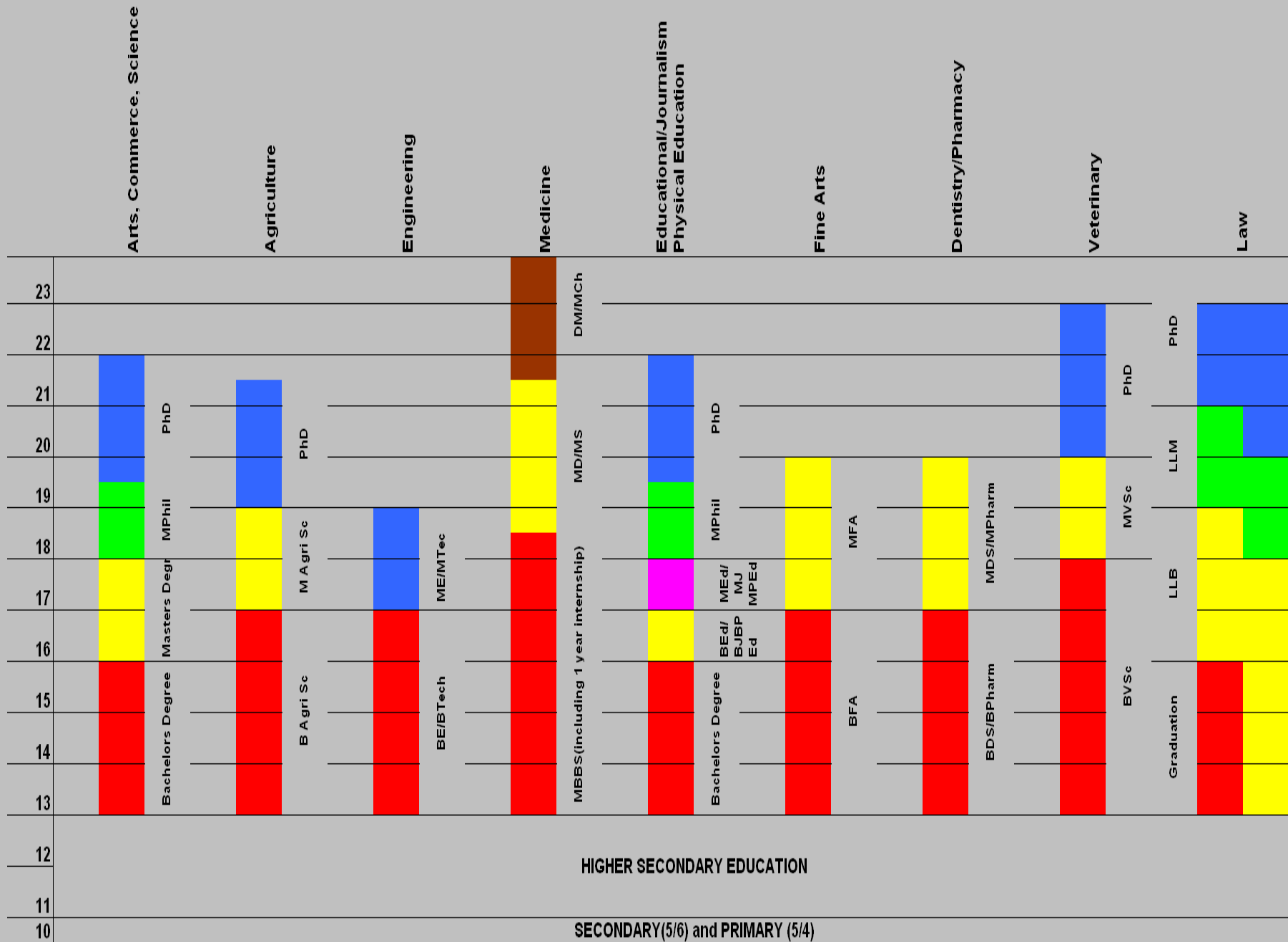
**India**

# **Structure of Education**

# Structure of Higher Education

SECONDARY(5/6) and PRIMARY (5/4)

HIGHER SECONDARY EDUCATION



**Indian Initiatives**  
**in**  
**Internationalisation of Higher Education**

# AIU

## Initiatives for Internationalisation of Higher Education

- MoU
- Equivalence of Degree
- Interface with International Organisations
- International visits of VCs Committee to France, Australia, Thailand, Sri Lanka
- Joint Seminars – AIU-AVCC, CPU, Asia Link
- Roundtables on Internationalisation
  - Roundtable of VCs held at Guru Nanak Dev University, Amritsar, 2002
  - Roundtable of VCs held at University of Mysore, Mysore, 2001
- Annual Meeting
  - Participation of Foreign Delegates
  - International Forum on Higher Education
- Government of India – Joint Working Groups

# INDIA

## International Students

### Why prefer India?

- Quality Education
- Strong University Network
- Global recognition to Indian professionals
- Education in English
- Low Cost
- Infrastructure – International Standard
- Liberal Visa Policies
- Increasing number of Scholarships

Sources : [➤http://www.hinduonnet.com](http://www.hinduonnet.com)  
[➤http://www.accra-mail.com](http://www.accra-mail.com)

Source: AIU Data 2004-05

# AIU

## MoU – National Organisations

- **Australian VCs Committee (AVCC)**  
**(17 October 2006)**
- **Hochschulrektorenkonferenz (HRK),  
Germany**  
**(3 February, 1997 renewed on 18 November, 2002)**

# AIU

## MoU – National Organisation

- **La Conférence des Présidents d' Université (CPU) and La Conference des Directors d'Ecoles et Foprmations d'Ingenieurs (CDEFI), France  
(31 January, 2006)**
- **Indo French Consortium of Universities  
(26 January, 2008)**
- **Committee of VCs & Directors (CVCD), Sri Lanka  
(2001)**

# AIU

## MoU – National Organisations

### Participation in International Universities

- Advisor Asia Link Programme

# AIU

## MoU – National Organisations

- MoU Danish School of Education, University of Aarhus with Universities of Netherlands, Spain, England for Life long learning  
(29 January, 2008)
- Proposal from Grand Ecole, France

# AIU

## MoU – National Organisations

- Scholarships for 60 Indian students to facilitate exchange of student at Masters/Doctoral level
- On going dialogue to involve French industries for sponsoring the candidates for Masters & Doctoral level programme

**AIU**

# **MoU – National Organisations**

- Association Universities in the Netherlands

(VSNU) 17 July, 2008

Proposed Scholarship Programme

# AIU

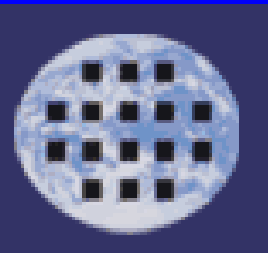
## Interface with International Organisations



**Association of Commonwealth Universities, London  
(ACU)**



**International Association of Universities, Paris  
(IAU)**



**Global University Network for Innovation, Cataluna, Spain  
(GUNI)**

# AIU

## Interface with International Organisations

### Association of Commonwealth Universities, London (ACU)

- Large number of universities

Member of Commonwealth Universities  
Associations

- India had opportunity to chair the ACU

# AIU

## Interface with International Organisations

### International Association of Universities, Paris (IAU)

- UNESCO based organisation
- AIU is the member

# AIU

## Interface with International Organisations

### Global University Network for Innovation, Cataluna, Spain (GUNI)

- Recent membership

# AIU

## Interface with International Organisations



**International Sports Federation, Brussels  
(FISU)**

**Asian Universities Sports Federation  
(AUSF)**



**University Mobility in the Indian Ocean Rim  
(UMIOR)**

**Chair & Secretariat with AIU**



**Commonwealth of Learning, Canada  
(COL)**

# AIU

## Interface with International Organisations



**World Bank, Washington (WB)**  
**(22 November, 2003)**



**United Nations Educational, Scientific and Cultural  
Organisation, Paris (UNESCO)**  
**(May 2007)**



**Institute of International Education, New York (IIE)**  
**(April 2007)**

# **International Students in Indian Universities**

# National Strategies: Student Mobility

## Categories of Students

- Government of India supported students
- Students sponsored by foreign governments
- Self-financing students

# National Strategies: Student Mobility

- Exchange Programme
  - Student Exchange Programme
  - Researchers Exchange Programme
  - Teacher Exchange Programme
  - Educational Administrators Exchange Programme

# National Strategies: Student Mobility

- Indo Australian Exchange Programme
- Up to 20 students (10 from each side) and 10 faculty (5 from each side)
- Student exchange for up to 6 months
- Faculty exchange for about a month

# National Strategies: Student Mobility

- AIU initiated Indo-French Consortium of Universities: University to University (MOU) 2006 & 2008
- Consortium of University 2008
  - 40 scholarship for Master programme and
  - 20 for research (Ph.D.)

# India ICCR Scholarships

<b>S.No.</b>	<b>Name of the Scheme</b>	<b>Slots</b>
1	General Cultural Scholarship Scheme	453
2	Bangladesh Scholarship Scheme	100
3	Sri Lanka Scholarship Scheme	60
4	Mauritius Scholarship Scheme	30
5	ICCR Scholarship Scheme	100
6	Cultural Exchange Programme	330
7	Commonwealth Scholarship/Fellowship Plan	49

*Contd*

# India

## ICCR Scholarships *Contd from page 1*

<b>S.No.</b>	<b>Name of the Scheme</b>	<b>Slots</b>
8	Africa Day	01
9	Craft Instructors	10
10	Aneurin Bevan	02
11	Dadoo Naicker	01
12	Okita Memorial Scholarship for Indian Nationals	02
13	Special Scholarship Scheme for Afghanistan	500
	<b>TOTAL</b>	<b>1638</b>

*Contd*

# India ICCR Scholarships *Contd from page 2*

	<b>Agency Work</b>	
1	Silver Jubilee	30
1	Aid To Maldives	20
2	SAARC-Chair/Fellowship Scheme	19
3	Special Scholarship Scheme For Mauritian National (TCD Division MEA)	03
4	AYUSH Scholarship Scheme for BIMSTEC Member Countries (in Indian Traditional Medicine System such as Ayurveda, Unani Sidha & Homoeopathy)	30

*Contd*

# India ICCR Scholarships

	<b>Agency Work</b>	
5	TCS Colombo Plan	Vary from Year to Year
6	Mekong Ganga Co-operation Scholarship Scheme	50
7	Scholarship for Pacific Island Countries	14
	<b>TOTAL</b>	<b>166</b>
	<b>Grand Total (TABLE A &amp; B)</b>	<b>1804</b>

# INDIA

## International Students

### Origin

	<b>2004-05</b>	<b>%</b>	<b>2005-06</b>	<b>%</b>
<b>Asia</b>	<b>9849</b>	<b>74.23</b>	<b>10493</b>	<b>72.58</b>
<b>Africa</b>	<b>2005</b>	<b>15.11</b>	<b>2403</b>	<b>16.62</b>
<b>America</b>	<b>593</b>	<b>4.46</b>	<b>654</b>	<b>4.52</b>
<b>Europe</b>	<b>178</b>	<b>1.34</b>	<b>206</b>	<b>1.42</b>
<b>Australasia</b>	<b>55</b>	<b>0.41</b>	<b>71</b>	<b>0.49</b>
<b>Miscellaneous</b>	<b>587</b>	<b>4.42</b>	<b>629</b>	<b>4.35</b>
<b>Total</b>	<b>13267</b>	<b>100.00</b>	<b>14456</b>	<b>100.00</b>

Source: AIU Database 2005-06

# INDIA

## International Students

# SAARC Countries

<b>Countries</b>	<b>2004-05</b>	<b>2005-06</b>
Nepal	1352	1411
Sri Lanka	582	530
Bhutan	286	378
Bangladesh	940	331
Afghanistan	35	65
Myanmar	31	55
Maldives	60	40
Pakistan	1	7
<b>Total</b>	<b>3287</b>	<b>2817</b>

# INDIA

## International Students

### Origin (Top Ten Countries)

Countries	2004-05	2005-06
United Arab Emirate	1500	2034
Nepal	1352	1411
Iran	1120	1264
Saudi Arabia	419	551
Sri Lanka	582	530
Kenya	418	523
Mauritius	527	510
Oman	645	505
USA	398	483
Bahrain	382	481
<b>Total</b>	<b>7343</b>	<b>8292</b>

# INDIA

## International Students

### Origin (Top Ten Universities) (2005-06)

Name of the University	No of Foreign Students		
	M	F	T
Indira Gandhi National Open University, Delhi	1707	1293	3000
University of Pune, Pune	1550	905	2455
Manipal University, Manipal	682	735	1417
University of Delhi, Delhi	464	591	1055
Birla Institute of Technology & Science, Pilani	686	226	912
Bharati Vidyapeeth, Pune	353	88	441
University of Mysore, Mysore	266	123	389
Osmania University, Hyderabad	252	62	314
Aligarh Muslim University, Aligarh	200	50	250
Banaras Hindu University, Varanasi	161	53	214
<b>Total</b>	<b>6321</b>	<b>4126</b>	<b>10447</b>

# Indian Students Abroad

U.S.A.

# International Students Fields of Study

The leading two fields of study, **Business & Management** and **Engineering**, accounted for 193,031 or **34%** of all international students

# U.S.A. Students Abroad

Short-term study abroad accounted for 52%  
of all study abroad programs

# India

## Internationalisation of Higher Education

### Source of Funding

#### Categories of Students

- Government of India supported students
- Students sponsored by foreign governments
- Self-financing students

# Indian Students in US

## Academic Level (2006 - 2007)

• Under-Graduate	15.0 %
• Post-Graduate	71.1 %
• Others	12.8 %
• OPT (Optional Practical Training)	1.2 %

# Indian Students in US

Year	# of Students from India	% of Total Foreign Students in US	# of US Study Abroad Students Going to India
2006/07	83,833	14.4%	n/a
2005/06	76,503	13.5%	2,115 (up 19.7%)
2004/05	80,466	14.2%	1,767
2003/04	79,736	13.9%	1,157
2002/03	74,603	12.7%	692
2001/02	66,836	11.5%	627
2000/01	54,664	9.9%	750
1999/00	42,337	8.2%	811
1998/99	37,482	7.6%	707
1997/98	33,818	7.0%	684
1996/97	30,641	6.7%	601
1995/96	31,743	7.0%	470

**Note: Study abroad in 2006/07**

**Source: Institute of International Education, Open Doors 2007**

# Indian Students in US

- The all-time high enrollment of 83,833 Indian students in the U.S. in the year 2006-07
- 10% growth from last year's enrollment of 76,503 in the year 2005-06
- The total of 80,466 students enrolled in the year 2004-05

# Acknowledgements

We acknowledge the services of the AIU Staff:

- Dr. Usha Rai Negi, Sr. Research Assistant, Research Division
- Mr. Bharat Pathak, Data Processing Assistant, Computer Division



**Thank you**

# Deemed Universities Funded by UGC

1. Central Institute of English & Foreign Languages, Hyderabad
2. Deccan College Post Graduate and Research Institute, Pune
3. National Institute of Technology (REC), Calicut
4. Rashtriya Sanskrit Vidyapeetha, Tirupati
5. Sri Sathya Sai Institute of Higher Learning, Anantapur
6. Jamia Hamdard, Hamdard Nagar New Delhi
7. Shri Lal Bahadur Shastri Rashtriya Sanskrit Vidyapeeth, New Delhi
8. Gujarat Vidyapeeth, Ahmedabad
9. National Institute of Technology (REC), Srinagar
10. Birla Institute of Technology, Mesra, Ranchi
11. Gokhale Institute of Politics & Economics, Pune
12. Tata Institute of Social Sciences, Mumbai

*Contd on page 2*

## Deemed Universities Funded by UGC *Contd from page 1*

13. Tilak Maharashtra Vidyapeeth, Gultekadi, Pune
14. Thapar Institute of Engineering and Technology, Patiala
15. Banasthali Vidhyapith, Banasathali, Rajasthan
16. Birla Institute of Technology & Science, Pilani
17. Jain Vishva Bharati Institute, Ladnun
18. Avinashlingam Institute for Home Science & Higher Education for Women, Coimbatore
19. Gandhigram Rural Institute, Gandhigram
20. Sri Chandrasekharendra Saraswathi Viswa Mahavidyalaya, Enathur, Kanchipuram
21. S.R.M. Institute of Science & Technology, Chennai
22. Central Institute of Higher Tibetan Studies, Sarnath Varanasi
23. Dayalbagh Educational Institute, Dayalbagh, Agra
24. Gurukula Kangri Vishwavidyalaya, Hardwar

# Deemed Universities (Self Funded)

1. International Institute of Information Technology, Hyderabad
2. National Institute of Technology, Warangal
3. National Institute of Technology, Silchar
4. Bihar Yoga Bharati, Munger
5. Indian Agricultural Research Institute, New Delhi
6. National Museum Institute of History of Art, Conservation and Museology, Janpath New Delhi
7. School of Planning and Architecture, New Delhi
8. TERI School of Advanced Studies, New Delhi
9. Rashtriya Sanskrit Sansthana, New Delhi
10. Indian Institute of Foreign Trade, New Delhi
11. Sardar Vallabhbhai National Institute of Technology, Surat
12. National Dairy Research Institute, Karnal
13. National Brain Research Centre, Gurgaon
14. National Institute of Technology, Kurukshetra

*Contd on page 2*

# Deemed Universities (Self Funded) *Contd from page 1*

15. National Institute of Technology, Hamirpur
16. Indian School of Mines, Dhanbad
17. National Institute of Technology, Jamshedpur
18. Indian Institute of Science, Bangalore
19. Manipal Academy of Higher Education, Manipal
20. National Institute of Mental Health & Neuro Sciences, Bangalore
21. Swami Vivekananda Yog Anusandhana Samsthana, Bangalore
22. National Institute of Technology Karnataka, Surathkal
23. Jawaharlal Nehru Centre for Advanced Scientific Research, Bangalore
24. National Institute of Technology, Calicut
25. Lakshmbai National Institute of Physical Education, Gwalior
26. Maulana Azad National Institute of Technology, Bhopal
27. Bharati Vidyapeeth, Lal Bahadur Shastri Marg Pune
28. Central Institute of Fishries Education, Mumbai

*Contd on page 3*

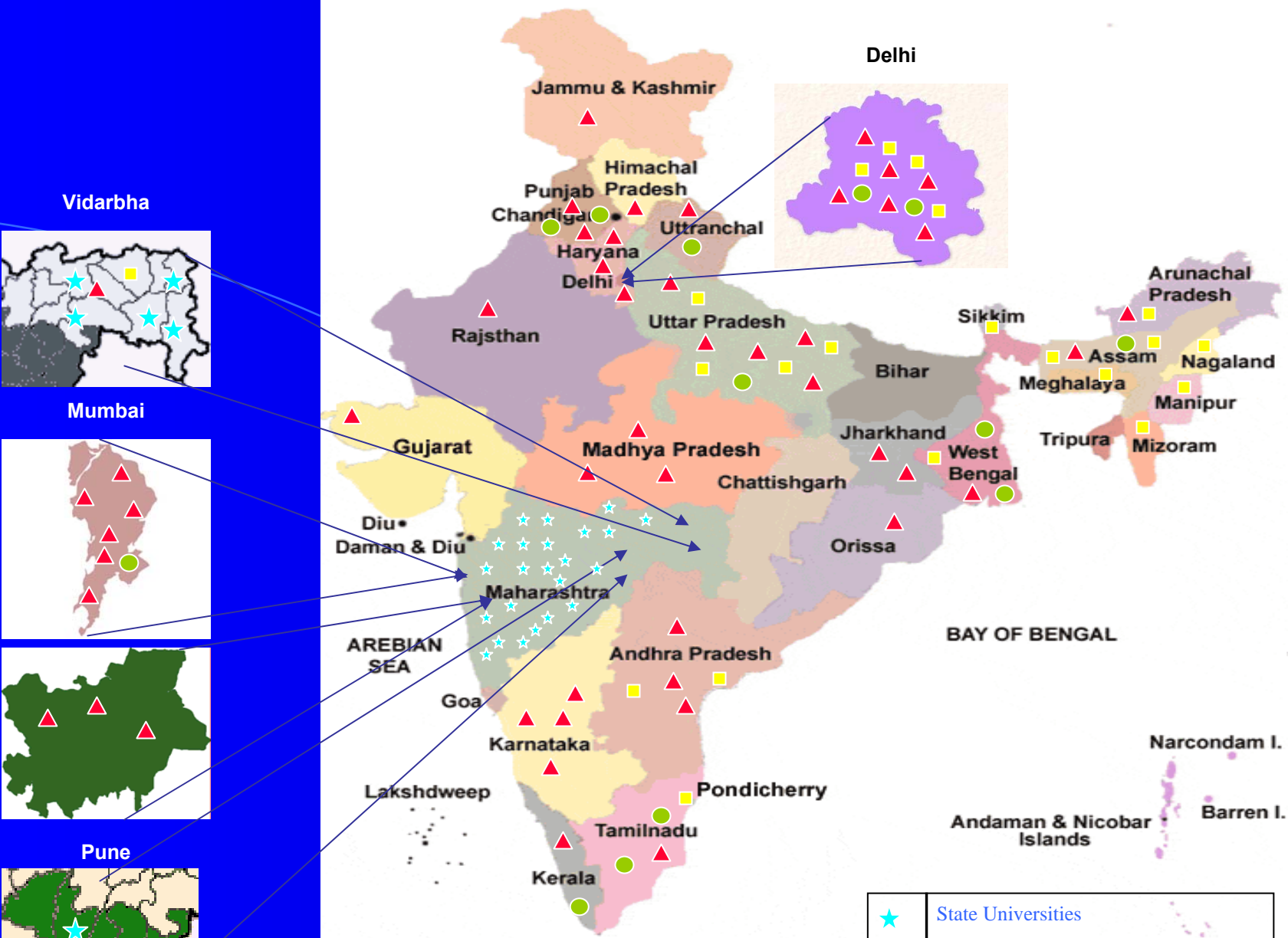
# Deemed Universities (Self Funded) *Contd from page 2*

29. Indira Gandhi Institute of Development Research, Mumbai
30. Defence Institute of Advanced Technology, Girinagar, Pune
31. International Institute For Population Sciences, Mumbai
32. Tata Institute of Fundamental Research, Mumbai
33. Symbiosis International Education Centre, Pune
34. Padmashree Dr. D.Y. Patil Vidyapeeth, Nerul Navi Mumbai
35. Visvesvaraya National Institute of Technology, Nagpur
36. Dr. D.Y. Patil Vidyapeeth, Pimpri Pune
37. Narsee Monjee Institute of Management Studies, Mumbai
38. D.Y.Patil Education Society, Kolhapur
39. National Institute of Technology, Rourkela
40. Dr. B.R. Ambedkar National Institute of Technology, Jalandhar
41. Institute of Advanced Studies in Education, Sardarshahr
42. Malviya National Institute of Technology, Jaipur

*Contd on page 4*

# Deemed Universities (Self Funded) *Contd from page 3*

43. Sri Ramachandra Medical College and Research Institute, Chennai
44. Vinayaka Mission's Research Foundation, Salem
45. Shanmugha Arts, Science, Technology & Research Academy, Thanjavur
46. Vellore Institute of Technology, Vellore
47. Sathyabama Institute of Science and Technology, Chennai
48. Bharath Institute of Higher Education & Research, Chennai
49. Amrita Vishwa Vidyapeetham, Coimbatore
50. S.R.M Institute of Science and Technology, Chennai
51. Allahabad Agricultural Institute, Allahabad
52. Bhatkhande Music Institute, Lucknow
53. Indian Institute of Information Technology, Allahabad
54. Indian Veterinary Research Institute, Bareilly
55. Motilal Nehru National Institute of Technology, Allahabad
56. Forest Research Institute, Dehradun



★	State Universities
■	Central Universities
▲	Centrally Financed Deemed Universities
●	Institute of National Importance

# Students Enrollment State wise 2005-2006

States	Indian Population	Students Enrolment	%age of Students Enrolment
Andhra Pradesh	76,210,007	911709	1.19%
Arunachal Pradesh	1,097,968	6109	0.55%
Assam	26,655,528	225528	0.84%
Bihar	82,998,509	580689	0.69%
Chhattisgarh	20,833,803	172145	0.82%
Delhi	13,850,507	207967	1.50%
Goa	1,347,668	22277	1.65%
Gujarat	50,671,017	664841	1.31%
Haryana	21,144,564	278126	1.31%
Himachal Pradesh	6,077,900	104237	1.71%
Jammu & Kashmir	10,143,700	76678	0.75%
Jharkhand	26,945,829	220092	0.81%
Karnataka	52,850,562	708195	1.33%
Kerala	31,841,374	329498	1.03%
Madhya Pradesh	60,348,023	595736	0.98%
Maharashtra	96,878,627	1506702	1.55%
Manipur	2,293,896	40698	1.77%

(contd...)

# Students Enrollment State wise 2005-2006

Meghalaya	2,318,822	32319	1.39%
Mizoram	888,573	12816	1.44%
Nagaland	1,990,036	14053	0.70%
Orissa	36,804,660	386349	1.04%
Panjab	24,358,999	294304	1.20%
Rajasthan	56,507,188	408753	0.72%
Sikkim	540,851	4940	0.91%
Tamil Nadu	62,405,679	841755	0.74%
Tripura	3,199,203	22378	0.69%
Uttar Pradesh	166,197,921	1432815	0.86%
Uttaranchal	8,489,349	138617	1.63%
West Bengal	80,176,197	721762	0.90%
A & N Islands	356,152	2238	0.62%
Chandigarh	900,635	41537	4.61%
Lakshadweep	60,650	253	0.41%
Daman & Diu	158,204	651	0.41%
D & N Haveli	220,490	0	0
Pondicherry	974,345	21253	2.18%
<b>Total</b>	<b>1,028,737,436</b>	<b>11028020</b>	<b>1.07%</b>

# Students Enrollment as per study level: Universities / Colleges 2005-2006

Status	University Department & Colleges	Affiliated Colleges	Total (%age)	Percentage in affiliated colleges
Graduate	950892	8854085	9804977 (88.91)	90.30
Post Graduate	347096	691714	1038810 (9.42)	66.58
Research	64161	6555	70716 (0.64)	9.27
Diploma/ Certificate	64644	48873	113517 (1.03)	43.05
<b>Total</b>	<b>1426793</b>	<b>9601227</b>	<b>11028020</b>	<b>87.06</b>

# Total Enrolment Gender wise

2005 (contd...)

	<b>States</b>	<b>Scheduled Caste</b>			<b>Scheduled Caste</b>		
		<b>Male</b>	<b>Female</b>	<b>Total</b>	<b>Male</b>	<b>Female</b>	<b>Total</b>
1	Andhra Pradesh	82,964	37125	120089	19870	7770	27640
2	Arunachal Pradesh	0	0	0	3464	2152	5616
3	Assam	8,910	6114	15024	14289	11445	25734
4	Bihar	52,985	17300	70285	3824	1256	5080
5	Chhattisgarh	11,695	6598	18293	30091	17504	47595
6	Delhi	17,137	15419	32556	11447	8680	20127
7	Goa	169	177	346	282	174	456
8	Gujarat	25,240	16757	41,997	26944	19232	46176
9	Haryana	16,745	8426	25,171	0	0	0
10	Himachal Pradesh	7,797	5132	12,929	2673	1993	4666
11	Jammu & Kashmir	26	5	31	65	16	81
12	Jharkhand	7,375	3212	10,587	13253	8581	21834

# Total Enrolment Gender wise

2005 (contd...)

	States	Scheduled Caste			Scheduled Caste		
		Male	Female	Total	Male	Female	Total
13	Karnataka	44,021	32695	76,716	10619	5824	16443
14	Kerala	11,077	18102	29,179	1435	1876	3311
15	Madhya Pradesh	49,603	40353	89,956	33239	18321	51560
16	Maharashtra	90,981	57477	148,458	21166	9241	30407
17	Manipur	579	473	1052	7228	5920	13148
18	Meghalaya	241	196	437	8993	9025	18018
19	Mizoram	0	0	0	3574	2993	6567
20	Nagaland	49	51	100	7,440	5691	13131
21	Orissa	14,618	3879	18,497	9,911	901	10812
22	Panjab	11,475	12070	23,545	45	18	63
23	Rajasthan	34,317	10344	44,661	27733	7157	34890
24	Sikkim	104	108	212	554	637	1191

# Total Enrolment Gender wise

2005

	States	Scheduled Caste			Scheduled Caste		
		Male	Female	Total	Male	Female	Total
25	Tamil Nadu	44,022	36991	81013	1339	984	2323
26	Tripura	2,244	1383	3627	1880	994	2874
27	Uttar Pradesh	180,568	97401	277969	1947	942	2889
28	Uttaranchal	6,034	4650	10684	2688	1894	4582
29	West Bengal	67,520	33667	101187	10354	5878	16232
30	A & N Islands	0	0	0	106	143	249
31	Chandigarh	1,650	1329	2979	278	242	520
32	Lakshadweep	0	0	0	0	0	0
33	Daman & Diu	0	0	0	0	0	0
34	D & N Haveli	0	0	0	0	0	0
35	Pondicherry	1,660	1756	3,416	0	0	0
	<b>Total</b>	<b>791,806</b>	<b>469190</b>	<b>1260996</b>	<b>256861</b>	<b>149714</b>	<b>406575</b>

# Higher Education 2002-03

<b>Country</b>	<b>Tertiary students</b>
<b>Total Africa</b>	<b>6,680,500</b>
<b>Total North America</b>	<b>19,925,718</b>
<b>Total South America</b>	<b>8,445,751</b>
<b>Total Oceania</b>	<b>1,061,313</b>
<b>Total Asia</b>	<b>47,042,355</b>
<b>Total Europe</b>	<b>28,257,589</b>
<b>Grand Total</b>	<b>111,413,226</b>

**2% of Worlds population in Higher Education**

# INDIA

## International Students Region-wise distribution

	2004-05	2005-06
Western Asia	4025	4608
South Asia	4443	4124
Eastern Africa	1635	1915
Southeast Asia	812	1069
Eastern Asia	569	707
North America	561	611
Western Africa	139	225
Northern Africa	166	185
Northern Europe	55	83
Australasia	55	71
Southern Africa	56	66
Western Europe	36	65
Eastern Europe	28	33
Southern Europe	59	25
Central America & Caribbean	13	24
South America	19	19
Middle Africa	9	12
Miscellaneous*	587	629
<b>Grant Total</b>	<b>13267</b>	<b>14471</b>
<b>*PIO 603, Palestine 26</b>		

# INDIA

## International Students

### UMIOR: Member Countries Students in India

Countries	2004-05	2005-06
United Arab Emirate	1500	2034
Iran	1120	1264
Sri Lanka	582	537
Kenya	418	523
Mauritius	527	510
Oman	646	505
Thailand	293	335
Bangladesh	940	334
Yemen	345	319
Tanzania	123	222
Malaysia	108	206
Singapore	76	98
Indonesia	51	83
South Africa	35	28
Australia	9	20
Mozambique	16	20
Seychelles	14	3
Madagascar	1	1
<b>Total</b>	<b>6804</b>	<b>7042</b>

# INDIA

## International Students

### South East Asia (2004-05)

Thailand	293
Vietnam	210
Malaysia	108
Indonesia	51
Cambodia	22
Laos	07
East Timor	06
Philippines	05
<b>Total</b>	<b>702</b>

# INDIA

## International Students

### Western Asia (2004-05)

Behrain	382
Iraq	16
Israel	3
Jordan	76
Kuwait	302
Lebanon	5
Oman	646
Qatar	256
Saudi Arabia	419
Syria	68
Turkey	7
United Arab Emirate	1500
Yeman	345
<b>Total</b>	<b>4025</b>

**INDIA**  
**International Students**  
**Eastern Africa (2004-05)**

Djibouti	48
Eritrea	36
Ethiopia	226
Kenya	418
Malawi	2
Mauritius	527
Mozambique	16
Rwanda	75
Seychelles	14
Somalia	62
Tanzania	123
Uganda	70
Zambia	11
Zimbabwe	6
<b>Total</b>	<b>1634</b>

# INDIA

## International Students

### South Asia (2004-05)

Nepal	1352
Bangladesh	940
Sri Lanka	582
Bhutan	286
Maldives	60
Afghanistan	35
Myanmar	31
Pakistan	1
<b>Total</b>	<b>3287</b>

## U.S.A. International Students Origins

Rank	Place of Origin	2003/04	2004/05	2004/05% of Int'l Student Total	2004/05% Change
	<b>WORLD TOTAL</b>	<b>572,509</b>	<b>565,039</b>	<b>-</b>	<b>-1.3</b>
<b>1</b>	<b>India</b>	<b>79,736</b>	<b>80,466</b>	<b>14.2</b>	<b>0.9</b>
<b>2</b>	<b>China</b>	<b>61,765</b>	<b>62,523</b>	<b>11.1</b>	<b>1.2</b>
<b>3</b>	<b>Korea, Republic of</b>	<b>52,484</b>	<b>53,358</b>	<b>9.4</b>	<b>1.7</b>
<b>4</b>	<b>Japan</b>	<b>40,835</b>	<b>42,215</b>	<b>7.5</b>	<b>3.4</b>
<b>5</b>	<b>Canada</b>	<b>27,017</b>	<b>28,140</b>	<b>5.0</b>	<b>4.2</b>
6	Taiwan	26,178	25,914	4.6	-1.0
7	Mexico	13,329	13,063	2.3	-2.0
8	Turkey	11,398	12,474	2.2	9.4
9	Germany	8,745	8,640	1.5	-1.2
10	Thailand	8,937	8,637	1.5	-3.4

**The leading five places of origin represented 47.2% of international students in the U.S.**

# U.S.A. International Students

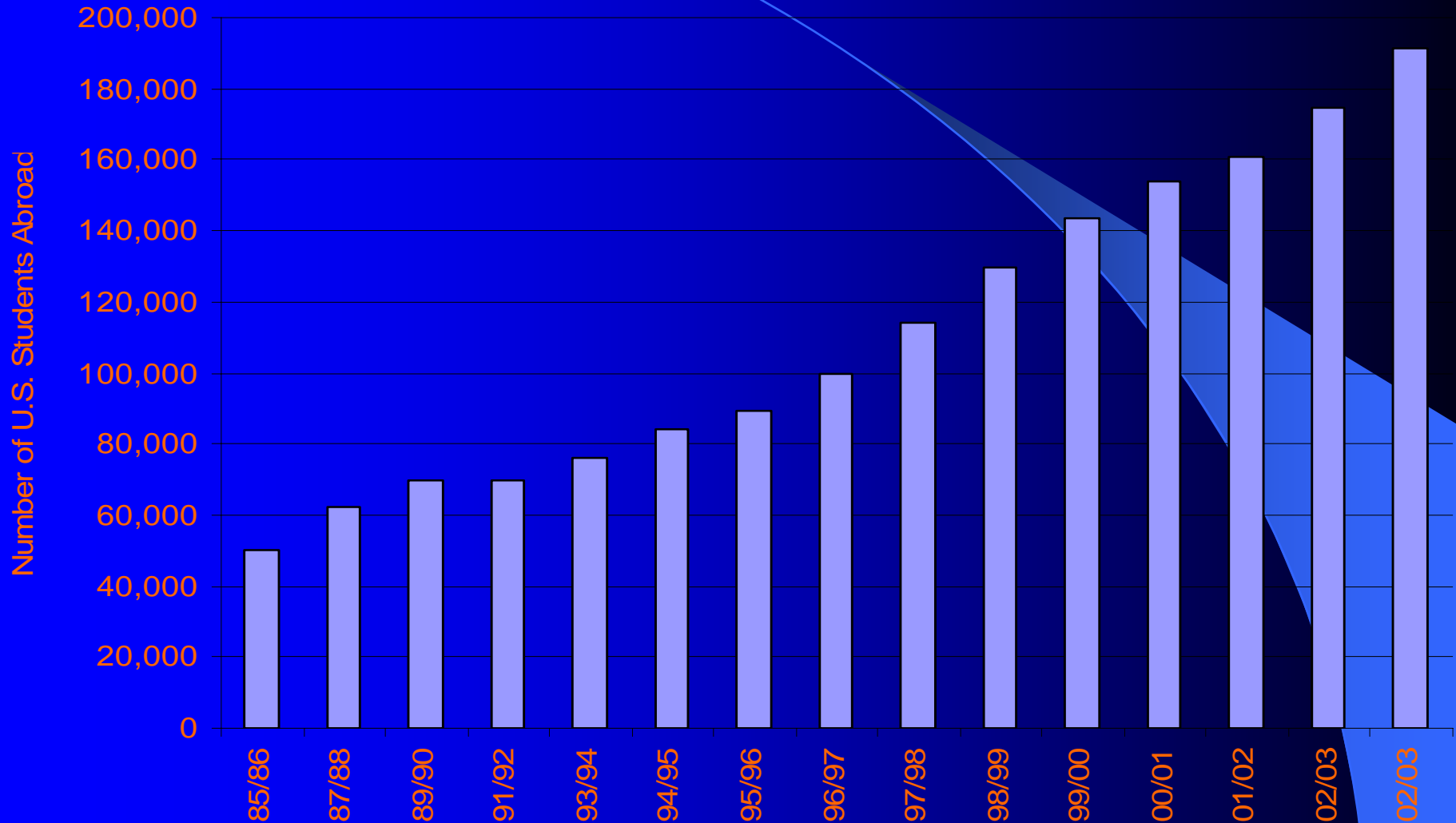
Place of Origin	2003/04	2004/05	% Change
India	79,736	80,466	0.9

International students totals by Place of Origin, 2003/04 & 2004/05

Source: Open doors 2005, Report on International Educational Exchange, Institute of International Education

U.S.A

# Students Abroad



The number of U.S. students studying abroad for academic credit has increased by 47% since 1998, and by 151% in a decade

Source: Open doors 2005, Report on International Educational Exchange, Institute of International Education

# Student Enrolment

## Asia 47 million students:

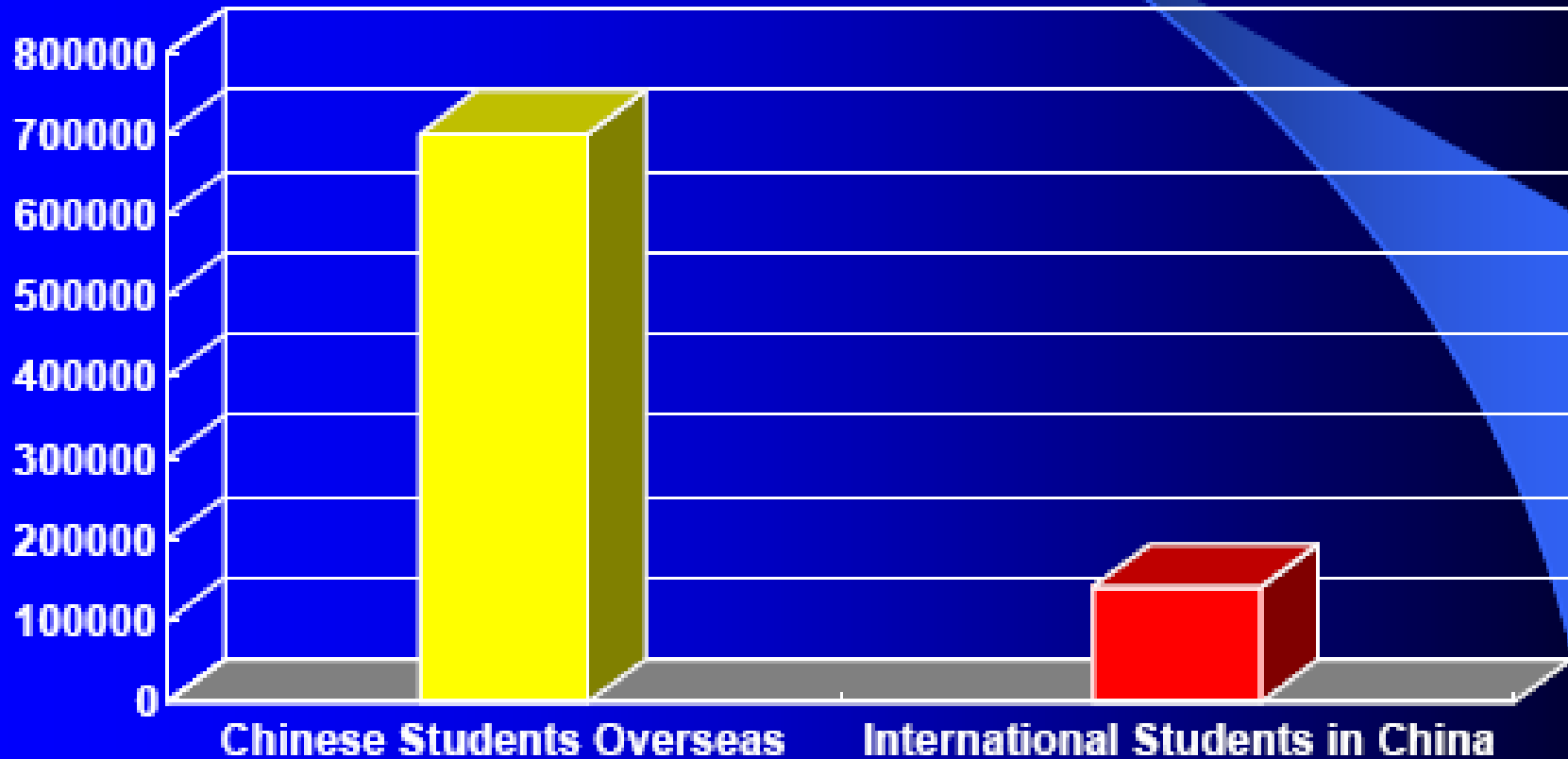
- 45 per cent of the world's total
- two-third come from the continent's five largest educational systems:
  - China (12 million),
  - India (10 million),
  - Japan (4 million),
  - Indonesia and the Republic of Korea (3.1 million each)

Source: Statistical Overview, Higher Education in the World 2006, UNESCO

## National contextual data and enrolment ratios, 2002-03

Country	GER	Students/ 100,000 population	UN Pop Est 2002 (in 000s)	HDI Score 2004
<i>Asia</i>				
Republic of Korea	85	6,562	47,700	<b>0.888</b>
Japan	49	3,107	127,654	<b>0.938</b>
Thailand	37	3,430	62,833	<b>0.768</b>
Philippines	31	3,084	79,999	<b>0.753</b>
Turkey	25	2,353	71,325	<b>0.751</b>
Indonesia	15	1,444	219883	<b>0.692</b>
China	13	931	1,304,196	<b>0.745</b>
<b>India</b>	<b>11</b>	<b>923</b>	<b>1,065,462</b>	<b>0.595</b>

# Mobile Students of China in 2005



Source: Ms. Zhang Xiuqin, China Scholarship Council (CSC), June 17<sup>th</sup>, 2006

# Indian Students Abroad (H.E.) (2006-07)

• USA	83, 833
• Australia	40, 000
• UK	21, 000 approx*
• Canada	7, 500 approx*
• China	5, 000 approx*
• Germany	4, 200 approx*
• New Zealand	3, 000 approx*
• Singapore	2, 000
• France	1, 200 approx*
<b>Total</b>	<b>1, 87, 733 approx</b>

# Indian Students in US

## Historical trends

- **India** has been the **number one sending place of origin since 2001/02** when it surpassed China.

# Human Development Index 1950-2000

	1950	1960	1973	1980a	1980b	1992	2000
China	0.163	0.248	0.407	0.475	0.554	0.594	0.726
India	0.160	0.206	0.289	0.296	0.434	0.439	0.577

Source: (1) For 1950, 1973 and 1992, Nicholas Crafts, 'The Human Development Index and Changes in the Standard of Living: Some Historical Comparisons', in *European Journal of Economic History*, Vol. 1 (1997), pp. 299-322; for 1960 and 1980a, UNDP, *Human Development Report* (New York: Oxford University Press, 1997); and for 1980b and 2000, UNDP, *Human Development Report* (New York: Oxford University Press, 2002)

(2) SOUTH ASIA Journal of South Asian Studies, South Asian Studies Association, Vol. XXVIII, No. 2, August 2005

# Equivalence of Qualifications

# Parameters

- Structure of Education
  - Primary
  - Secondary
  - Higher/Senior Secondary
  - University
- Entry requirement

(contd...)

# Parameters

- Nomenclature of Certificate/Degree
- Accreditation status of the University/Institutions in the Home Country
- Syllabus/course curriculum
- Evaluation Modalities
- Acceptance of the Degree outside the Country for Academic and Employment purpose

# EQUIVALENCE OF DEGRESS AUTHORISED INDIAN AGENCIES

- Association of Indian Universities
- Universities/University Level Institutions
  
- Statutory Professional bodies e.g.
  - All India Council for Technical Education

*Contd on page 2*

# EQUIVALENCE OF DEGRESS AUTHORISED INDIAN AGENCIES

*Contd from page 1*

- National Council for Teacher Education
- Medical Council of India, etc.

# Equivalence to 12 year Secondary Stage qualification with +2 Stage (India)

## Asia

- Bhutan
- Bahrain
- Indonesia
- Iran
- Iraq
- Israel
- Japan
- Jordan
- Korea
- Kuwait

## Asia

- Lebanon
- Malaysia
- Mauritius
- Nepal
- Oman
- Qatar
- Saudi Arabia
- Thailand
- United Arab Emirates
- Vietnam
- Yemen

Contd...

# Equivalence to 12 year Secondary Stage qualification with +2 Stage (India)

## America

- Canada
- USA
- Fiji

## Europe

- Norway
- Ireland

## Australia

## Africa

- Ethiopia
- Kenya
- Nigeria
- South Africa
- Sudan
- Tanzania
- Uganda
- Zaire

# Equivalence to 12 year Secondary Stage qualification with +2 Stage (India)

- Higher Secondary Certificate:
  - Pakistan
  - Bangladesh
  - Nepal
- IB Diploma:
  - Switzerland

# Equivalence to 12 year Secondary Stage qualification with +2 Stage (India)

- 'Abitur' - Germany
- General Certificate of Education 'Ordinary Level' (GCE)
- General Certificate of Secondary Education (GCSE)
- International General Certificate of Secondary Education (IGCSE) and
- General Certificate of Education "Advanced level " of the following Countries:
  - U.K
  - Hong Kong
  - Singapore
  - Scotland
  - Sri Lanka
- Baccalaureate Certificate:
  - Afghanistan – 12 year
  - Iraq – 12 year
  - France – 13 year
  - Guinea (Republic of ) – 13 year
  - Tunisia – 13 year

# Equivalence with Indian Bachelor Degree

- Degrees from accredited Universities in :
  - Afghanistan
  - Botswana & Swaziland
  - Egypt
  - Ethiopia
  - Japan
  - Korea
  - Indonesia
  - Iran
  - Iraq
  - Kuwait
  - Jordan
  - Philippines
  - Saudi Arabia
  - Sudan
  - Thailand
  - USA
  - Vietnam
- Bachelor Degrees from Accredited Universities in Commonwealth Countries are equated with corresponding Bachelor Degree

# Equivalence with Indian Master Degree

- Degrees from accredited Universities in :
  - Japan
  - New Zealand
  - Nigeria
  - Philippines
  - Sweden
  - Thailand
  - USA

# Equivalence with Indian Ph. D Degree

- Degrees from accredited Universities in :
  - Australia
  - Austria
  - Belgium
  - France
  - Iran
  - UK

# EQUIVALENCE ACCORDED BY AIU

- Master Degree in Public Health Administration of Institute of Social Sciences, The Hague, equated with corresponding degree of Indian Universities

# Equivalence of Degrees with Variations

- Cases of M. Sc degree considered on individual merit.
- The factors considered for individual merit
  - Assurance of Knowledge and skill by
    - The continuation of field work and research before awarding degree
    - Consideration of previous professional experience before joining the course

# M. Sc Degree

International Institute for Infrastructural Hydraulic  
and Environmental Engineering (IHE)

Delft, Netherlands

## Eligibility

- 3 years professional experience after B. Sc Degree
- 11 months diploma course
- 6-8 months individual research or design work submitted as thesis

M. Sc Degree in Geo information  
Science and Earth Observation of ITC,  
Netherlands can be taken up provided  
all the parameters for granting  
equivalence are met.

# Observations with Variations

- Reduced duration from 6-9 months
- Course contents same as for 2 years
- Fee structure same
- Is it for academic excellence or for financial gains?
- Is it genuine requirement for academicians?
- Performance outcome of the product of both the systems
- Is there any comparative study between the two groups?

# Observations with Variations

- By variation are we commercialising?
- Is there any academic advantage?
- If variations are allowed, they acceptable to the academic world?

# Observations with Variations

- What are the added advantages of reduced duration except cutting down the time factor?
- How the universities in the developed countries have reduced the duration of the courses from 24 months to 15-18 months without changing the fee structure?
- Is there any comparison between the product of two systems?
- If we accept the variations what will be the lower limit?

# EQUIVALENCE OF FOREIGN DEGREES

- Indian Universities receive around 14,000 foreign students every year
- Issuance of Equivalence Certificate for admission to higher courses including professional courses done by AIU
- Eligibility for employment
- Equivalence of Foreign Degrees - 2006 (2nd Edition) gives details on equivalence of foreign qualifications and mechanism of granting equivalence.

# Unaccredited Collaborative Programme

The degrees awarded by the accredited Foreign Universities operating in India without any legal provision are not equated

# Guidelines for Granting Equivalence to Post Graduate Diploma in Management

- PG Programme must be approved by All India Council for Technical Education
- Atleast two batches of Students must have passed out
- Institute must have adequate physical infrastructure, library, computer facilities, research base for Post Graduate Teaching

# Guidelines for Granting Equivalence to Post Graduate Diploma in Management

- Programme must be supported by Research Studies, Development Studies and Collaborative Research with Industries
- Faculty and Student Profile must reflect a National Character
- Faculties qualifications, service conditions and pay-scales must conform to AICTE guidelines
- Equivalence will be accorded for five years

# Mutual Recognition of Degrees

- The Department of Education, Ministry of Human Resource Development has signed a Protocol in 1987 with USSR (now CIS countries) on the mutual recognition degrees from both sides

# Professional Education in India

# Professional Education in India

- Medical
  - MCI
  - DCI
- Health
  - Homoeopathy
  - Ayurved
  - Nursing
- Technical & Management
  - AICTE
  - Engineering
  - Technological
- Law
  - Undergraduate
  - Postgraduate
  - Research
- Teacher Education

# INDIA

## International Students

### Academic Level (2004 - 2005)

• Under-Graduate	77.58 %
• Post-Graduate	12.45 %
• Research Level	1.39 %
• Others	8.58 %